

Seating

Category: Prevention without Positioning

Gel-T®

Segmented gel-filled bladder cradled between two soft foam layers. Provides excellent pressure redistribution and pain relief for those at moderate risk of pressure injuries. Wipe-clean cover keeps out moisture and helps reduce shear and friction.

Cover also features non-skid bottom. Perfect for use in home or facility; 18-month warranty. Height 2.5".

Weight limit 250 lbs.

* sizes 18" x 18" and larger

up to 350 lbs. (500 lbs. on Bariatric sizes)

Medicare Code:

General Use – E2601.

For sizes 22" or wider, use E2602.

⚠ WARNING: Cancer and Reproductive Harm – www.P65Warnings.ca.gov



Geo-Matt® PRT (3" high density)

Modification of Geo-Matt's time-tested design creates lower, firmer base needed by more active wheelchair users. Same individually responsive cells, Ring-of-Air® heat/moisture reduction, and pressure redistribution as original Geo-Matt. Cover consists of anti-slip top surface and non-skid bottom. Built-in sleeve in bottom of cover allows use of molded Sling-Fill base (not included-see page 46); 18-month warranty. Height 3".

Weight limit 250 lbs.

(4" height/500 lb. weight limit on Bariatric sizes)

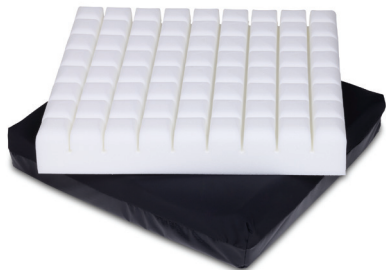
Medicare Code:

Skin Protection – E2603

(only versions with fabric cover).

For sizes 22" or wider, use E2604.

⚠ WARNING: Cancer and Reproductive Harm – www.P65Warnings.ca.gov



Geo-Matt® (4" medium density)

Proven design provides outstanding pressure redistribution and comfort. Unique geometry creates individually responsive cells that reduce shearing and cradle bony prominences. Ring-of-Air® design helps reduce heat and moisture build-up; 18-month warranty. Height 4".

18-month warranty. Height 4".

All models 18"W x 16"L.

Weight limit 200 lbs.

Medicare Code:

Skin Protection – E2603 (only versions with fabric cover).



Item #	Description	Qty/Cs
8015-05	Gel-T, 15"W x 15"L	1
8016-05	Gel-T, 16"W x 16"L	1
801618-05	Gel-T, 16"W x 18"L	1
8017-05	Gel-T, 17"W x 17"L	1
801816-05	Gel-T, 18"W x 16"L	1
8018-05	Gel-T, 18"W x 18"L	1
8019-05	Gel-T, 19"W x 19"L (fits Geri-chairs)	1
802018-05	Gel-T, 20"W x 18"L (fits Geri-chairs)	1
8021-05	Gel-T, 21"W x 21"L (fits Geri-chairs)	1
Bariatric sizes:		
B802218-05	Gel-T, 22"W x 18"L	1
B802418-05	Gel-T, 24"W x 18"L	1

Fire barrier versions can be ordered to conform with 2000 NFPA 101 (Life Safety Code) and Cal TB# 133. To order, replace the "-05" suffix with "-29" in item number.

QUICK FACTS

Use for:

- Comfort
- Prevention of breakdown



Item #	Description	Qty/Cs
50746-070	Geo-Matt PRT, 18"W x 16"L, w/ Soft Skin® sleeve	6
50746-083	Geo-Matt PRT, 18"W x 16"L, w/ vinyl/nylon cover	6
PRT1616-96	Geo-Matt PRT, 16"W x 16"L, w/ anti-slip cover	6
PRT1616-96-1	Geo-Matt PRT, 16"W x 16"L, w/ anti-slip cover	1
PRT1816-96	Geo-Matt PRT, 18"W x 16"L, w/ anti-slip cover	6
PRT1816-96-1	Geo-Matt PRT, 18"W x 16"L, w/ anti-slip cover	1
PRT1818-96	Geo-Matt PRT, 18"W x 18"L, w/ anti-slip cover	6
PRT1818-96-1	Geo-Matt PRT, 18"W x 18"L, w/ anti-slip cover	1
PRT2018-96	Geo-Matt PRT, 20"W x 18"L, w/ anti-slip cover	6
PRT2018-96-1	Geo-Matt PRT, 20"W x 18"L, w/ anti-slip cover	1
Bariatric sizes (4" high):		
BPRT2218-96	Geo-Matt PRT, 22"W x 18"L, w/anti-slip cover	6
BPRT2218-96-1	Geo-Matt PRT, 22"W x 18"L w/anti-slip cover	1
BPRT2418-96	Geo-Matt PRT, 24"W x 18"L w/anti-slip cover	6
BPRT2418-96-1	Geo-Matt PRT, 24"W x 18"L w/anti-slip cover	1

Fire barrier versions can be ordered to conform with 2000 NFPA 101 (Life Safety Code) and Cal TB# 133. To order, replace the "-96" suffix with "-29" in item number.

QUICK FACTS

Use for:

- Comfort
- Prevention of breakdown



Item #	Description	Qty/Cs
50746-040	Geo-Matt, cushion only	6
50746-050	Geo-Matt with Soft Skin® sleeve	6
50746-051	Geo-Matt with fire retardant Soft Skin® sleeve	6
50746-084	Geo-Matt with anti-slip cover	6

QUICK FACTS

Use for:

- Comfort
- Prevention of breakdown



SEATING